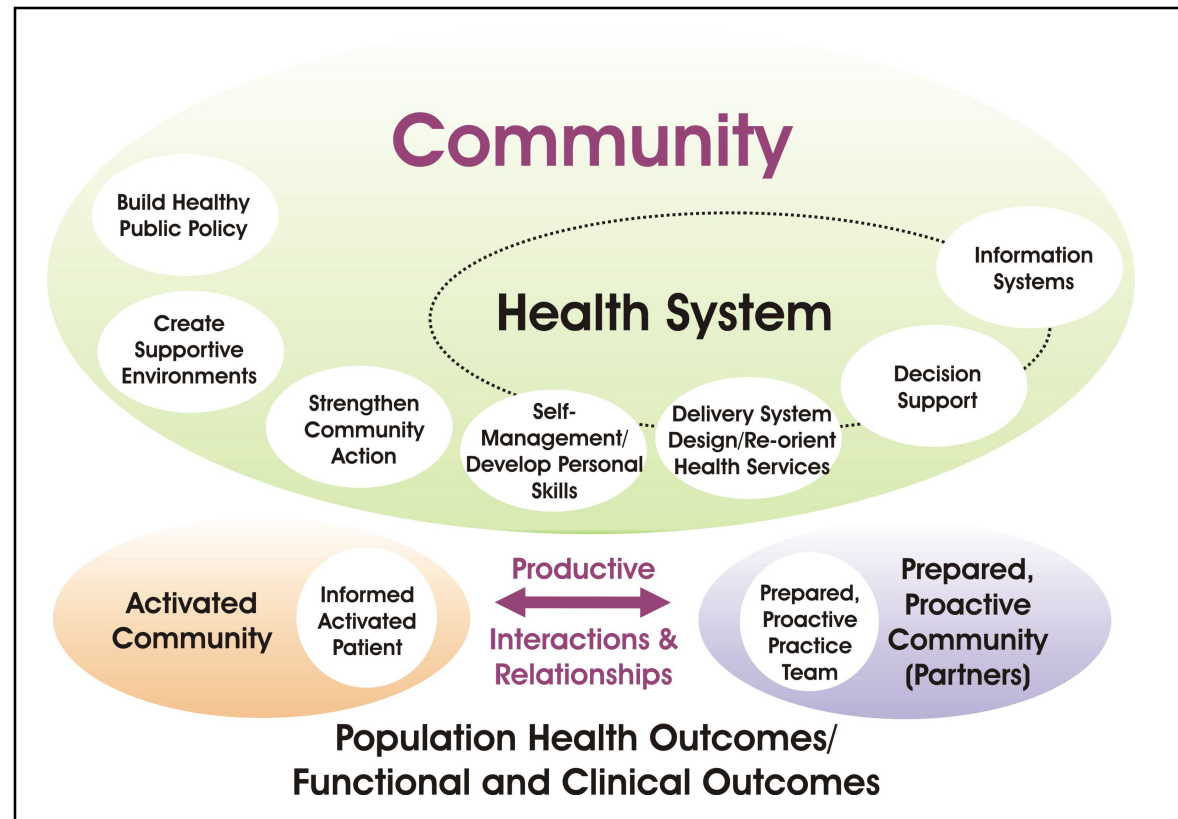


Figure 2.

The Expanded Chronic Care Model: Integrating Population Health Promotion



Created by Victoria Barr, Sylvia Robinson, Brenda Marin-Link, Lisa Underhill, Anita Dotts and Darlene Ravensdale (2002)
Adapted from Glasgow, R., Orleans, C., Wagner, E., Curry, S., Solberg, L. (2001) "Does the Chronic Care Model also serve as a template for improving prevention?" *The Milbank Quarterly*, 79(4), and World Health Organization, Health and Welfare Canada and Canadian Public Health Association. (1986). Ottawa Charter of Health Promotion.

Community



**Population Health Outcomes/
Functional and Clinical Outcomes**