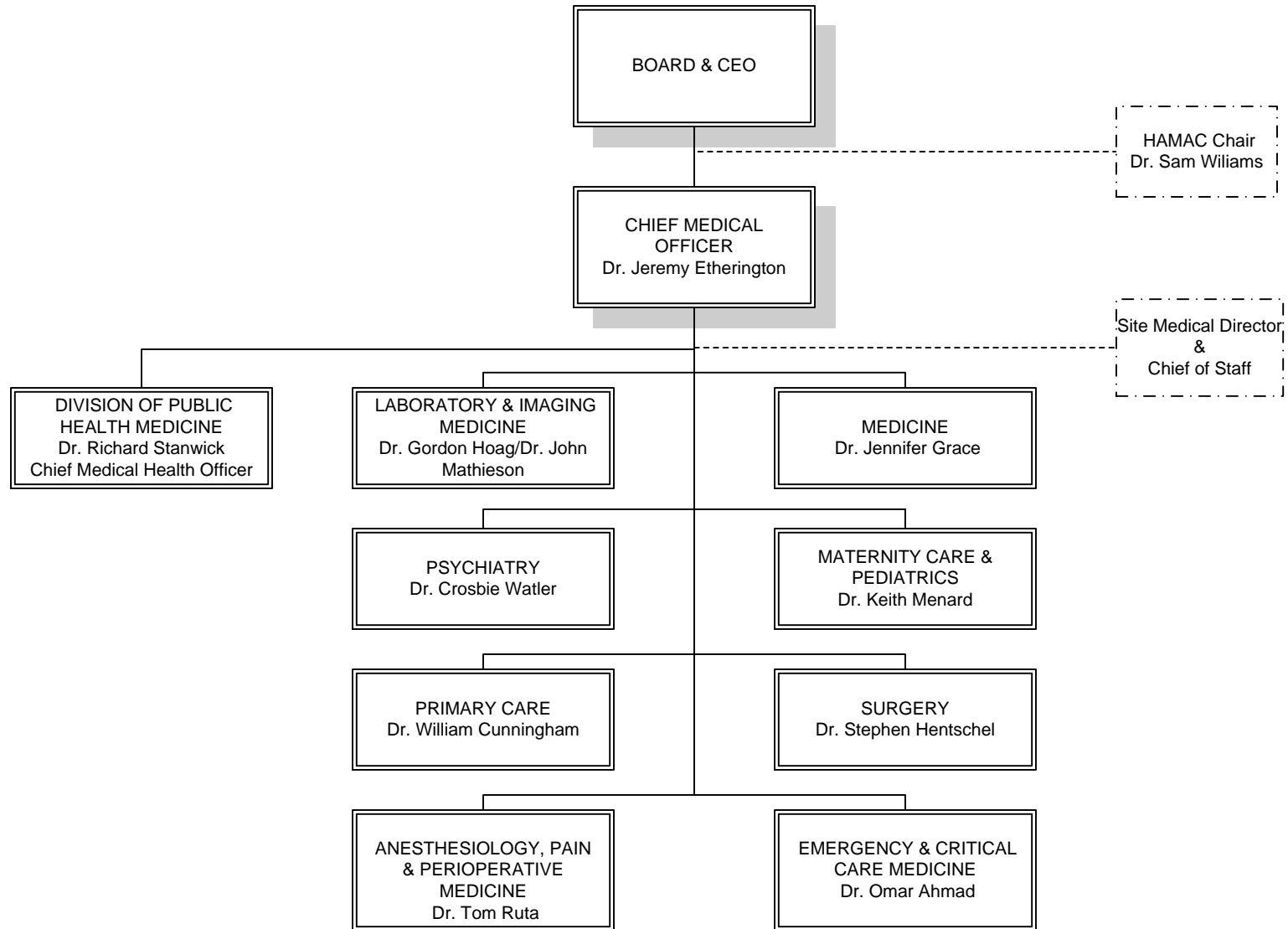
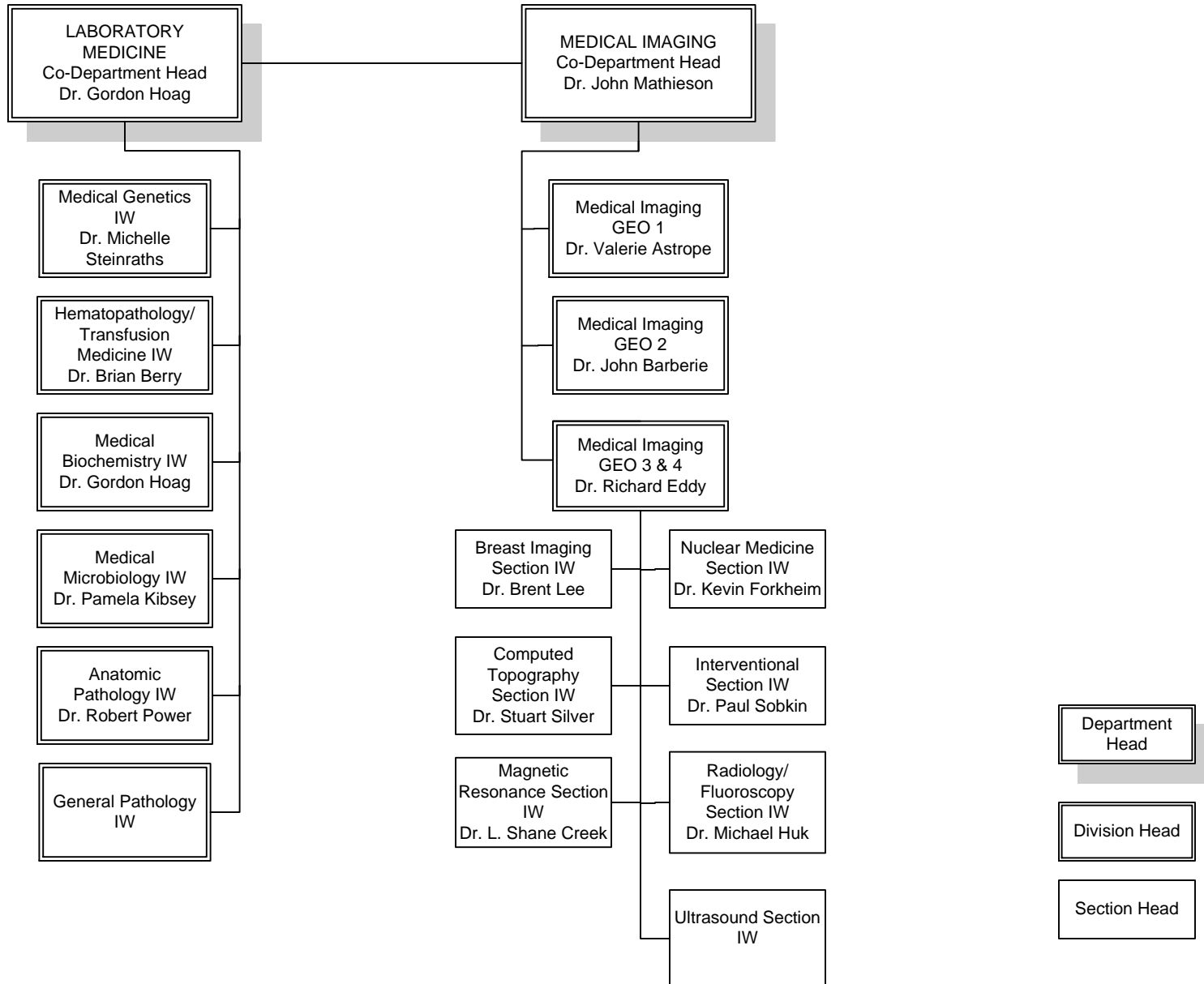


Island Health Medical Staff Department Structure

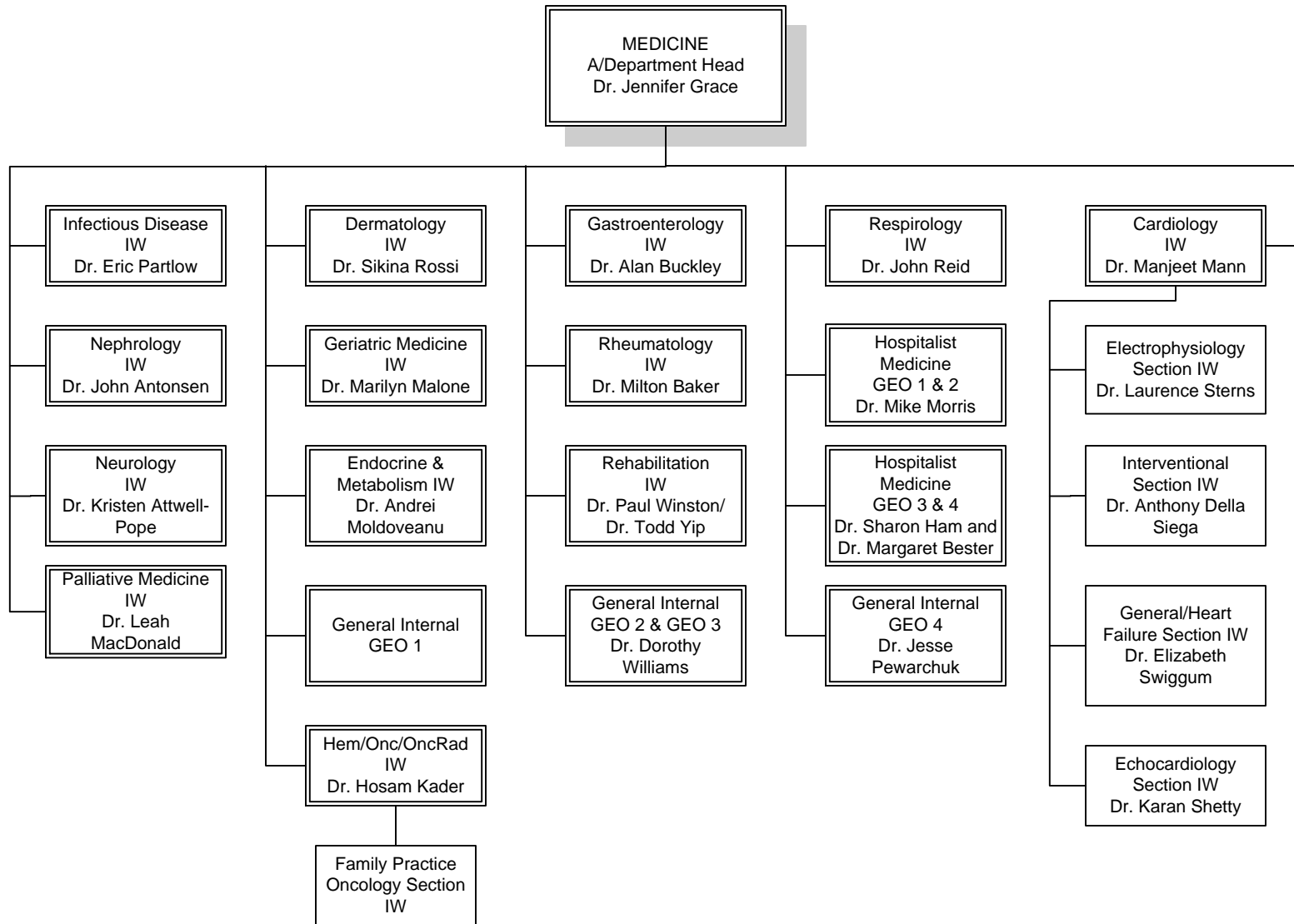


Laboratory & Imaging Medicine



6/27/2017

Medicine

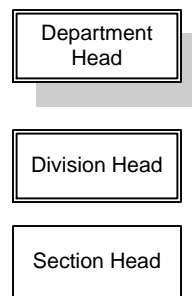
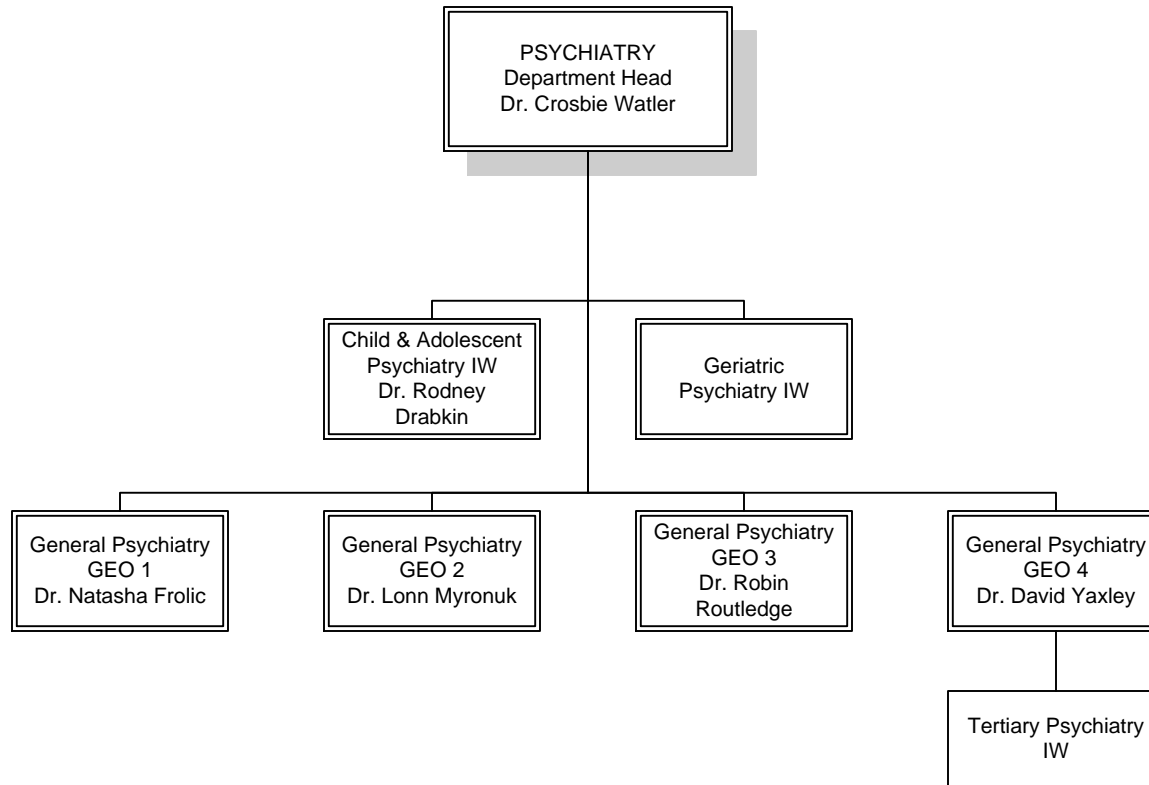


Department Head

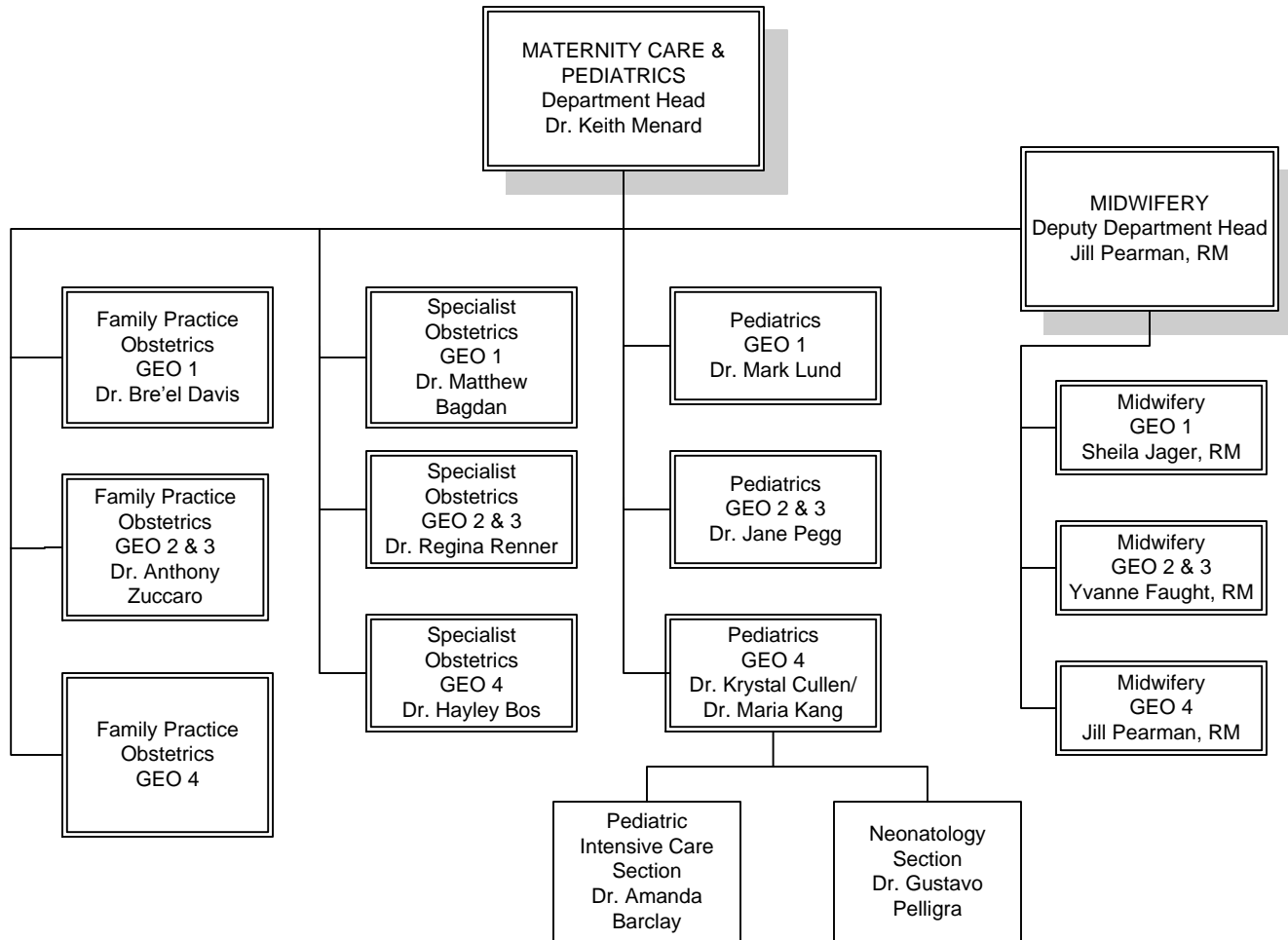
Division Head

Section Head

Psychiatry



Maternity Care & Pediatrics

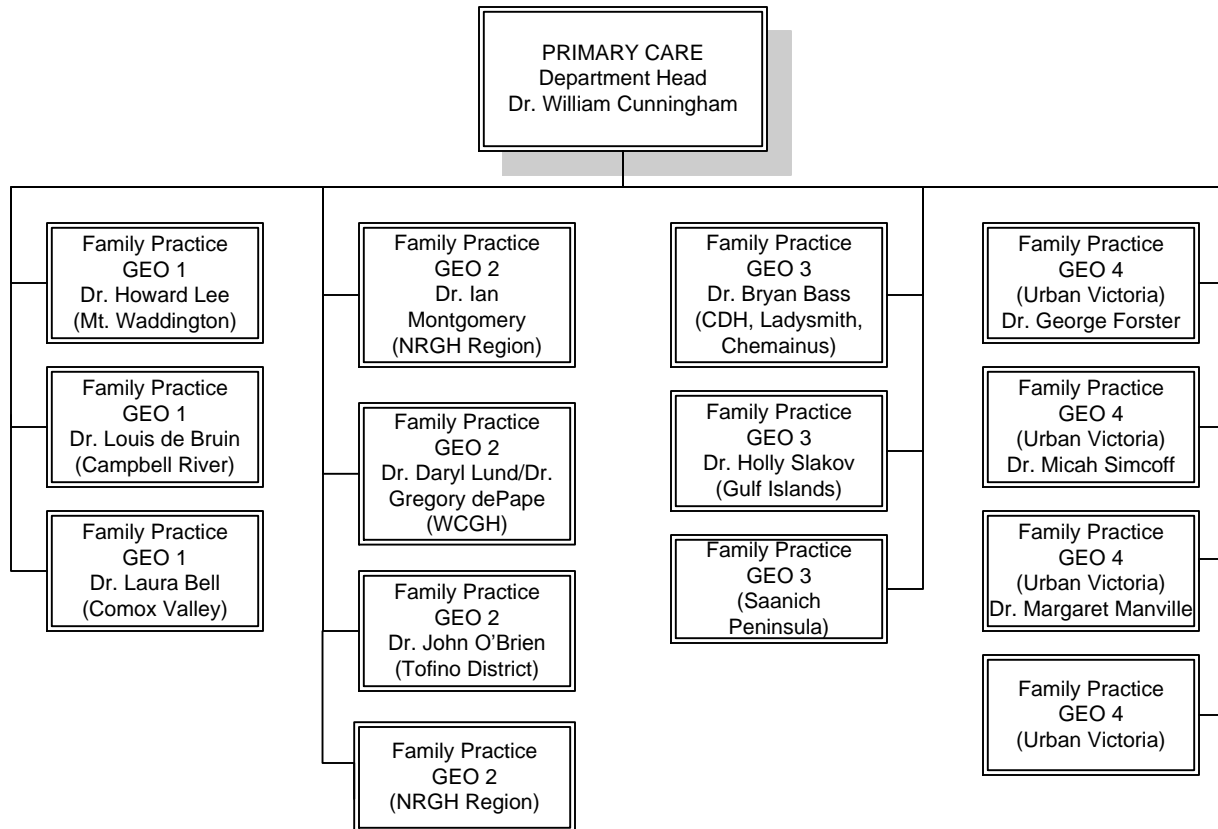


Department Head

Division Head

Section Head

Primary Care

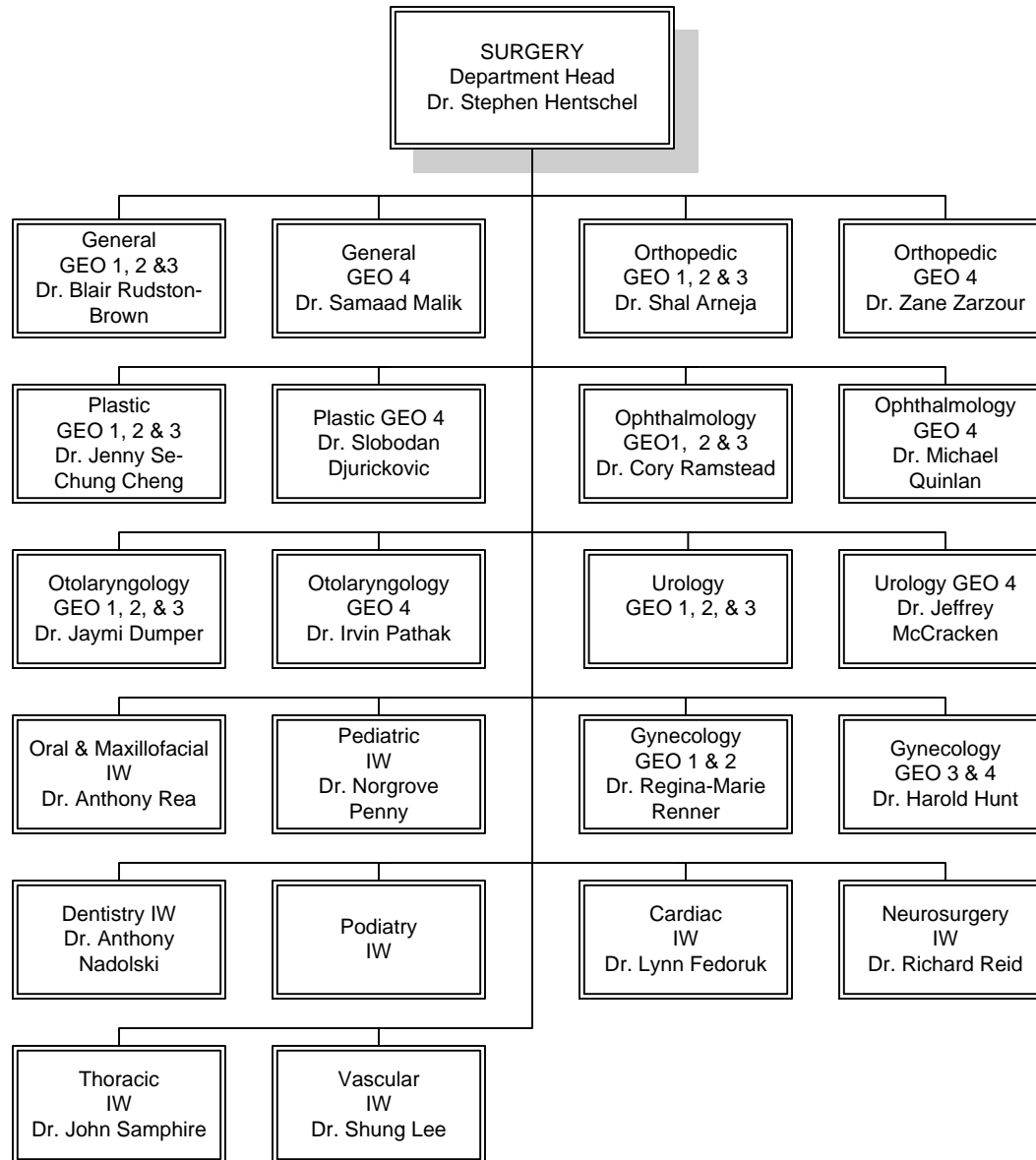


Department Head

Division Head

Section Head

Surgery

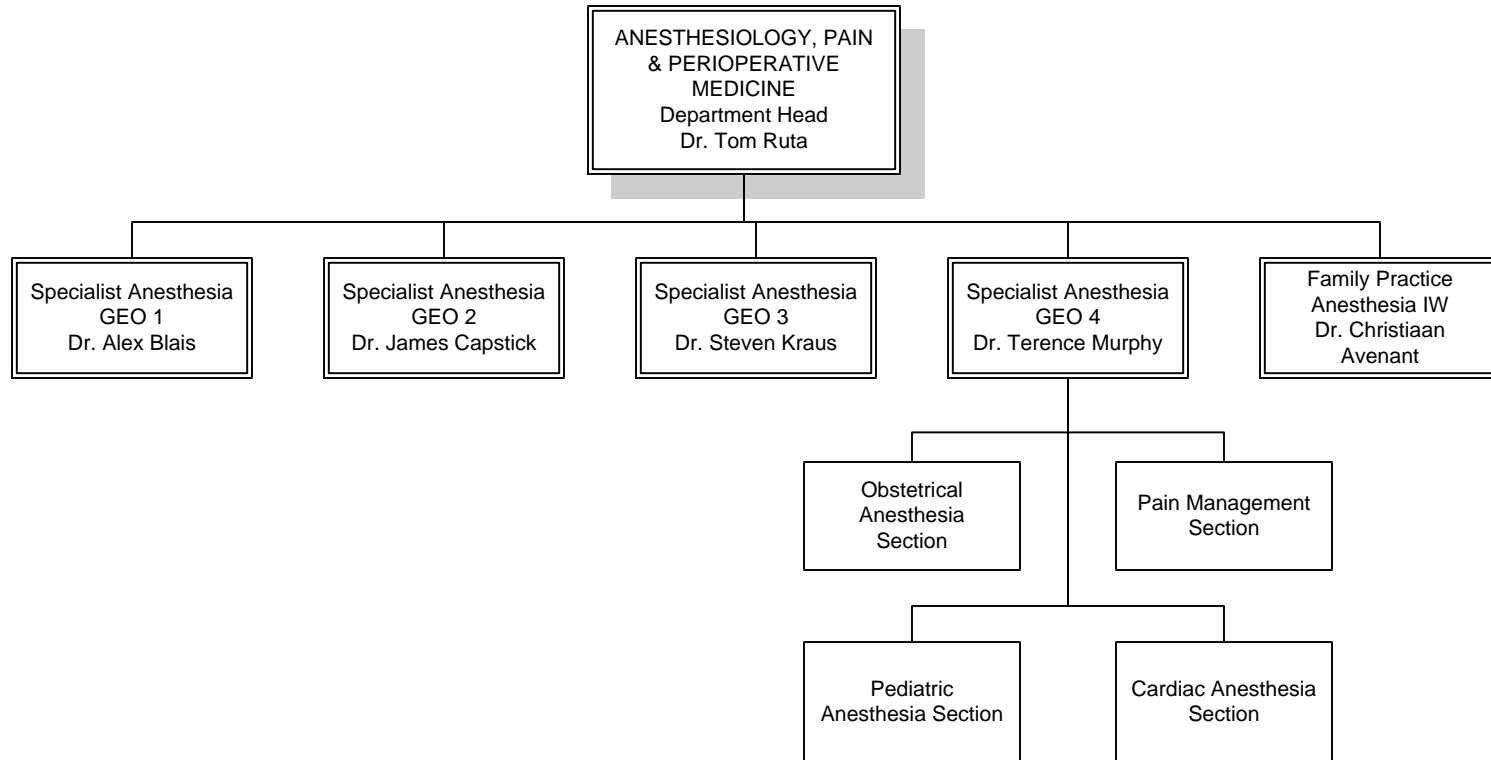


Department Head

Division Head

Section Head

Anesthesiology, Pain and Perioperative Medicine



Department Head

Division Head

Section Head

Emergency & Critical Care Medicine

