



Are Sunscreens, Body Lotions and Mouthwashes Considered Medications?

No. The ordinary, common sense definition for **medication** is “a substance used for medical treatment” or “treatment using drugs”. A **drug** is defined as “a medicinal substance”. A medicinal substance is defined as “substance having healing properties”. While sunscreens, mouthwashes and lotions have Drug Information Numbers (DIN), they do not meet the above stated definition of a drug or a medication.

Licensing wouldn't expect to see sunscreen, body lotion or mouthwash on a Medication Administration Record and a doctor's order should not be required. As sunscreens, body lotions and mouthwashes are not considered to be medications by definition, residential care facility staff do not have to follow the required medication processes set out in the Adult Care Regulations when these products are used with residents.

Reminder Regarding the Criminal Records Review Re-Check

A reminder to all licensed care providers that care for residents under the age of 19: amendments have been made to the *Criminal Record Review Act (CRRA)* to include the requirement for a Five-Year Re-check of Criminal Record Checks. The Criminal Record Review Agency has allowed for a three-year implementation period for re-checks, depending on the size of your organization. The following dates apply to employers and employees in licensed care facilities that provide care for residents under the age of 19 under Part 3 of the *CRRA*:

- ❖ **December 31, 2008:** for employees employed by employers who on January 1, 2008 employed fewer than six employees;
- ❖ **December 31, 2009:** for employees employed by employers who on January 1, 2008 employed more than five but fewer than 100 employees;
- ❖ **December 31, 2010:** for employees employed by employers who on January 1, 2008 employed 100 or more employees.

Licensing has a legal responsibility to ensure that all licensed providers meet this requirement and that the Criminal Record Checks are current and valid.

For VIHA Region-wide Updates:

South Island – Gateway Village

#201-771 Vernon Ave, Victoria, BC V8X 5A7, PH: 250-475-2235, FAX: 250-475-5130

Training:

Orientation to Licensing for New and Pending Managers of Residential Care Facilities

Date: October 1, 2009 - Time: 9:30-11:30 am.

Space is limited to 15 participants.

[What's New in Nutrition: Considerations for Menu Planning](#)

Dates: Call for information on dates for the fall.

Call 250-475-2235 for more information or to register for these sessions.

Central Island

#29 - 1925 Bowen Road, Nanaimo BC, V9S 1H1, PH: 250-739-5800, FAX: 250-751-1118

Training:

[What's New in Nutrition: Considerations for Menu Planning](#)

Date: June 17, 2009

Time: 10:00 – 12:00

Call 250-739-5800 for more information on upcoming Manager Orientation sessions or to register for

What's New in Nutrition: Considerations for Menu Planning.

North Island

#200-1100 Island Highway, Campbell River, BC V9W 8C6, PH: 250-850-2110, FAX: 250-286-3486

A Residential Care Facilities Licensing Newsletter



Renewed Residential Care Regulation – Upcoming Information Sessions from the Community Care Licensing Branch

After an extensive consultation process, the Ministry of Healthy Living and Sport is happy to announce the new Residential Care Regulation (RCR). This regulation will come into effect on October 1, 2009 and will replace the Adult Care Regulations and the residential pieces of the Child Care Licensing Regulation. These regulations provide increased protection to the health, safety and dignity of persons in care while being outcome-based where possible. The new RCR may be downloaded from the Community Care Licensing Branch website: <http://www.hls.gov.bc.ca/ccf/>

The Community Care Licensing Branch is part of the Population and Public Health Division of the Ministry of Healthy Living and Sport and is responsible for the development and implementation of legislation, policy and guidelines to protect the health and safety of people being cared for in licensed facilities. The Branch provides provincial stewardship for the operation of the community care licensing programs under the *Community Care and Assisted Living Act*.

Information sessions to introduce the new Residential Care Regulation (RCR) are being held across the province in all health authority regions. Licensees, including community care facility management and staff, are invited to attend a session to learn more about the new RCR. **Register now, as spaces are limited:**

Nanaimo: Tuesday, June 16, 2009, 1:00 to 3:00 p.m. **Site:** The Grand Hotel, 4898 Rutherford Road.

Campbell River: Wednesday, June 17, 2009, 1:00 to 3:00 p.m. **Site:** Painters Lodge, 1625 McDonald Road.

Victoria: Thursday, June 18, 2009, 1:00 to 3:00 p.m. **Site:** Victoria Conference Centre, 720 Douglas Street.

Register online: www.hls.gov.bc.ca/ccf/ Register by phone: 604-742-0040 or toll free 1-866-993-0040

YOU WERE ASKING...

The residents at my facility have lived here for 13 years. My LO says that I need to have them screened for TB. Can you explain to me what the requirements are for TB screening and records for residents in my facility?

If you have no records of any TB screening or testing for the persons in care at your facility, you are in non-compliance with Section 4(3)(a)(a.1) of the Adult Care Regulations and this will be noted on your inspection report. It may be that residents were screened and/or tested at one time but that the records no longer exist at some facilities. If the records are “lost”, residents will need to be re-screened for TB. If you have a new admission to your facility, you will need to ensure that they have been screened for TB prior to their admission. All records of TB screening and any TB tests for residents need to be kept permanently on file at the facility. (*Interpretation of the province's TB Control Program was taken from The Ministry of Health Services Tuberculosis Control Manual available on the BCCDC website: <http://www.bccdc.org/content.php?item=128>*)

cont'd pg 2

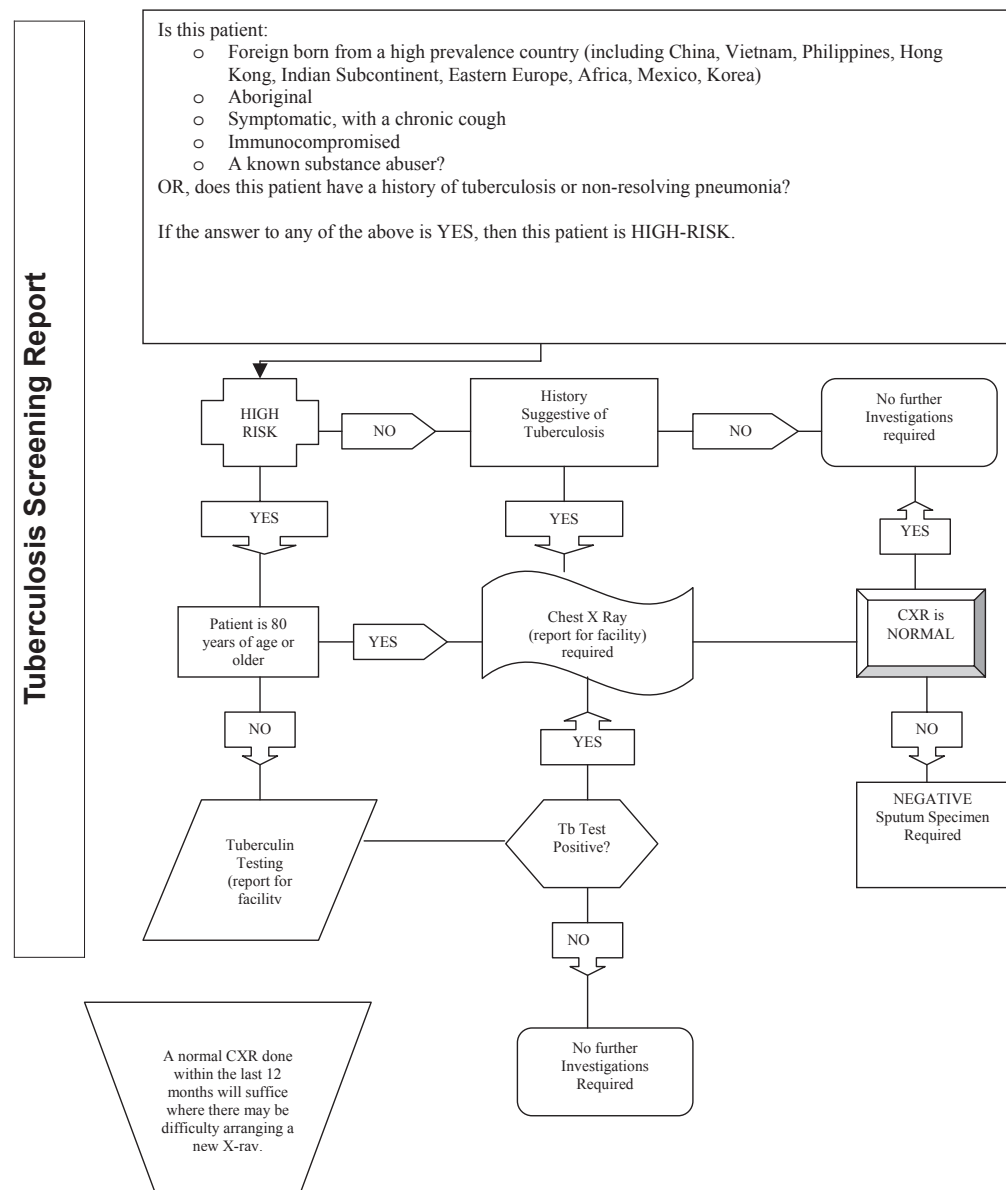


In this Issue

- Cover Page **Renewed Residential Care Regulation • You Were Asking**
- Page 2 & 3 **TB screening for Residents • Nutrition Resources • Health Link BC**
- Back Page **Criminal Records Review Re-check • VIHA Region-wide Update**

Produced by the Vancouver Island Health Authority - Child and Adult Residential Care Licensing

Previously, all residents had to have TB testing, either via a skin test or a chest x-ray prior to admission to a residential care facility. Now, all residents must be screened to determine if they fall into a high-risk category and only those residents screened as being a high-risk need to be tested for tuberculosis, either by skin test or via a chest x-ray. Refer to the attached sample of a TB Screening Report, which is a flow chart that illustrates the screening process. Contact your Licensing Officer to obtain a copy of sample of the TB Screening Report.



REMEMBER: Notify Licensing immediately when you make any changes to the number of beds in your facility that are funded and/or non-funded (required in Section 3(2) of the Adult Care Regulations.) This information appears on your facility licence, which you are required to post in your facility and should include accurate information regarding the facility's operation.

NUTRITION RESOURCES: MEALS AND MORE and AUDITS AND MORE

Meals and More is a food and nutrition manual for homes of adults and children with 24 persons or fewer in care. This manual has been written for people who assist those living in specialized residential care or small residential community care facilities providing care to children or adults with mental health concerns, or with developmental disabilities, or in need of drug and alcohol rehabilitation. This manual is a "how-to guide" containing information that will help you provide quality food and nutrition care for the people living in your facility and meets the requirements set out in the regulations for residential care under the *Community Care and Assisted Living Act*.

Audits and More is a nutrition and food service manual for adult residential care facilities with 25 persons or more in care and includes facilities designated for care of seniors, of persons with mental health concerns and persons undergoing drug and alcohol rehabilitation. This manual is a resource to develop a nutrition and food services monitoring/audit program in residential facilities having 25 or more persons in care and is intended for use by interdisciplinary teams working in adult residential community care facilities including, but not limited to, the Registered Dietitian (RD), Supervisor of Food Services/Nutrition Manager, Registered Nurse and other facility staff.

To access these manuals:

http://www.health.gov.bc.ca/library/publications/year/2008Meals_and_More_Manual.pdf

http://www.health.gov.bc.ca/library/publications/year/2008/Audits_and_More_Manual.pdf

Or check out the VIHA Licensing web page for this manual: www.viha.ca/mho/licensing

HealthLink BC

British Columbians have trusted health information at their fingertips with just a phone call or a click away with HealthLink BC. Just three numbers - 8-1-1 - on the phone or online at www.HealthLinkBC.ca means easy access to non-emergency health information.

This new service combines a number of proven health resources – like BC NurseLine, Pharmacist-After-Hours, Dial-A-Dietitian and BC HealthGuide – and makes them even easier to access now through the 8-1-1 phone line for non-emergency health issues.

Speak with a nurse about your symptoms, consult with a pharmacist about your medication questions or get healthy eating advice from a dietitian. You can also find the publicly funded health services and resources you need closest to you. Any time of the day or night, every day of the year, HealthLink BC is as close as your phone or the web 24/7.

FOR HEALTH AND HELPING PROFESSIONALS

The University of Victoria Continuing Studies offers courses in their Health and Wellness stream for Health and Helping Professionals.

For More Information, visit: WWW.CONTINUINGSTUDIES.UVIC.CA/HEALTH

Or to contact them by phone: 250-472-4747 or 250-721-8558

HSCL Nutrition and Dysphagia Team – Central Island

The Fall 2008 issue of this newsletter included contact information for the South Island HSCL Nutrition and Dysphagia Team. In this issue, the contact information for **Central Island** is highlighted:

Access to Services in Nanaimo:

If you are not currently receiving service: Call the General Enquiries Line and have your care card number handy. Telephone: 250-739-5749.

Outside of Nanaimo call: 1-877-734-4101.

If you are currently receiving service: Telephone: 250-755-6229. Monday to Friday - 8:30 a.m. to 4:00 p.m.
Office Address: 1665 Grant Avenue, Nanaimo.

A REMINDER TO ALL LICENSED CARE PROVIDERS IN THE CENTRAL VANCOUVER ISLAND REGION:

The Central Island Community Care Facilities Licensing Office has moved from its Wentworth Street location to:

#29-1925 Bowen Road, Nanaimo BC V9S 1H1

Phone: 250-739-5800 Fax: 250-751-1118