

# community health facts 2013

## Greater Victoria

### Demographics

Greater Victoria is home to approximately 225,000 people.

- 3% identify as Aboriginal.
- 9.5% are aged 75 and over.
- The total population is expected to grow by 10% over the next 20 years
- The over 75 population is expected to increase by 85%.

### Health and Wellbeing

Compared to the Island Health region as a whole, Greater Victoria residents have (based on the most recent data available):

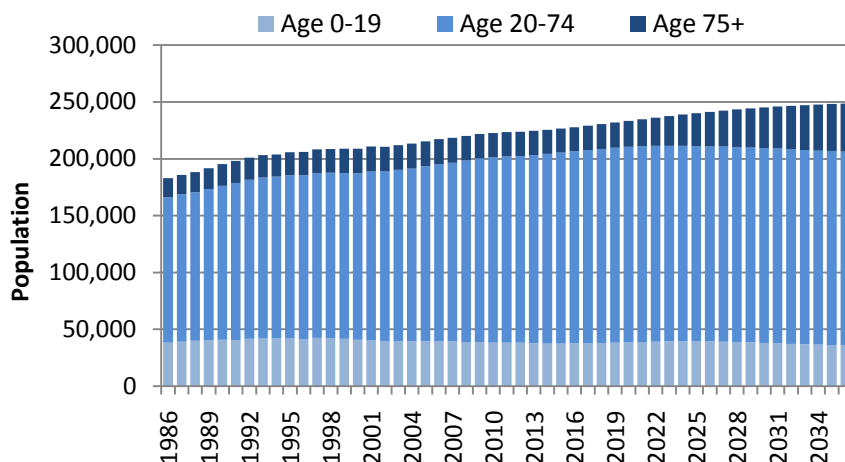
- A similar birth rate, but a lower teen birth rate.
- A lower rate of preterm births, but a similar rate of low birth weight babies.
- A similar life expectancy (82 years).
- A higher rate of death due to falls and drug-induced causes, but lower rate of deaths due to motor vehicle accidents and Pneumonia / Influenza.
- Similar to the Island Health region, leading chronic conditions include depression/ anxiety, hypertension, asthma and osteoarthritis.

### Social Determinants of Health

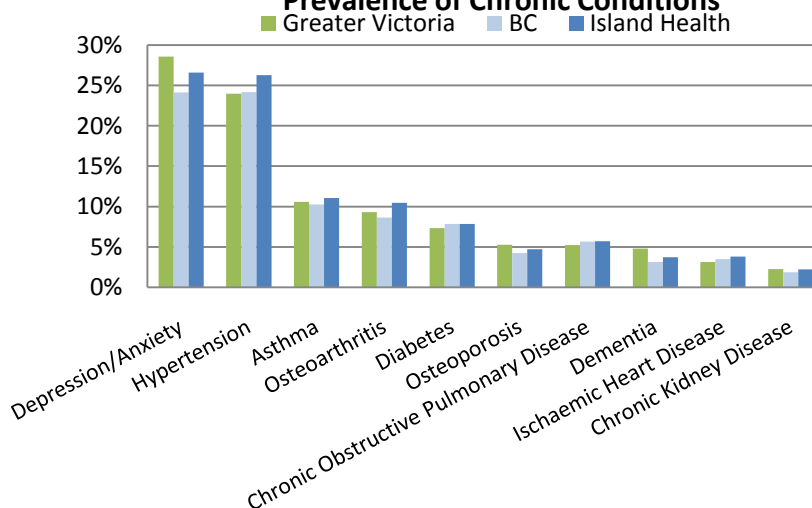
Housing, employment, education and social support can have a big impact on the health of our communities and our ability to make healthy lifestyle choices. Compared to Island Health overall (based on most recent data available):

- *Economic Wellbeing* – Greater Victoria has a lower unemployment rate and a lower proportion of people receiving employment insurance, but a higher proportion of low income persons and low income seniors.
- *Education* – Greater Victoria has a higher percentage of adults aged 25-64 with post-secondary education, but a lower percentage of 18 Year-Olds who graduated from high school.

Greater Victoria Population Growth



Prevalence of Chronic Conditions



### Social Determinants of Health *(continued)*

- *Child Health* – Greater Victoria has lower rate of children hospitalized for respiratory illness and for injury/poisoning.
- *Crime* – Greater Victoria has a higher crime rate, including a higher rate of serious crime, a higher rate of serious juvenile crime and a higher rate of illicit drug deaths.

### Health Services

Greater Victoria is served by the Royal Jubilee Hospital, Victoria General Hospital, and the Queen Alexandra Centre for Children’s Health, as well as the Victoria, Esquimalt and Saanich Health Units.

Greater Victoria has 2,025 residential care beds and 296 assisted living beds spread over 30 sites. There are an additional 665 residential care beds and 186 assisted living beds in nearby Saanich, Sooke and the Western Communities. Additional services available include public health, home and community care, and mental health and substance abuse.

Every year, Greater Victoria residents have about 37,000 hospital admissions, and 60,000 unscheduled emergency department visits.

Of the 37,000 admissions in 2011/12:

- 55% were to the Royal Jubilee Hospital,
- 39% were to Victoria General Hospital, and
- 6% were to other hospitals.

Of the 60,000 unscheduled emergency visits in 2012/13:

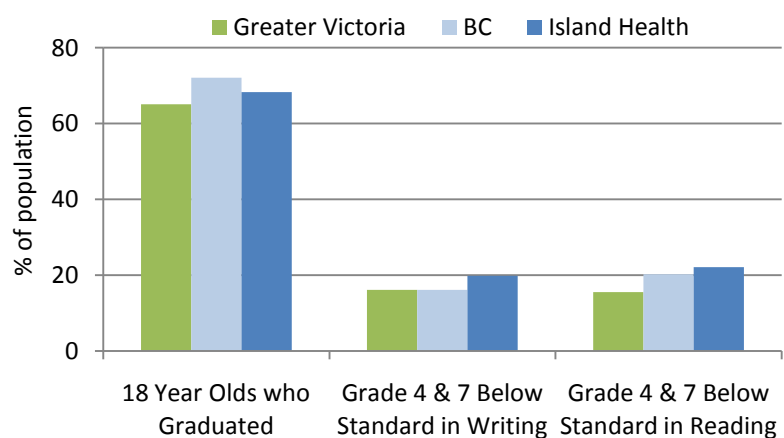
- 58% were to the Royal Jubilee Hospital,
- 37% were to Victoria General Hospital, and
- 37% of all visits were for those over the age of 60.

For more information on Island Health Services in your region, please visit: <http://www.viha.ca/locations/>

### Economic and Employment Statistics



### Education Statistics



### Greater Victoria Resident Cases by Hospital

